

Name

String Samurai



Bass

Bass Samurai

Bowing (2nd degree White belt)

Long bows

Musical notation for a bowing exercise on the bass clef staff. The exercise consists of four measures. Above the staff, there are square flags and 'V' symbols indicating bowing directions. The notes are: Measure 1: G2 (circled), A2 (circled), B2 (circled), C3 (circled); Measure 2: D3 (circled), E3 (circled), F3 (circled), G3 (circled); Measure 3: A3 (circled), B3 (circled), C4 (circled), D4 (circled); Measure 4: E4 (circled), F4 (circled), G4 (circled), A4 (circled). A circled 'A' is written below the second note of the first measure.

A-string (Yellow belt)

Mary Had a Little Lamb

Largo

Sarah Josepha Hale

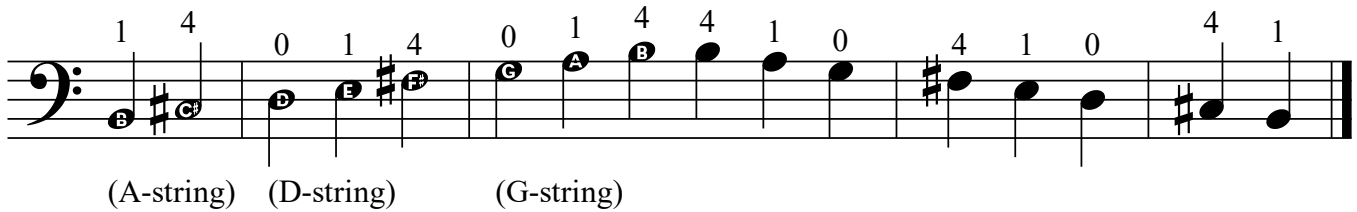
Musical notation for the piece 'Mary Had a Little Lamb' on the A-string. The piece is in 4/4 time and begins with a treble clef. The first three notes are G4 (finger 4), F4 (finger 1), and E4 (finger 0). The melody consists of quarter notes and eighth notes with beams, ending with a final whole note. The notes are: G4, F4, E4, D4, C4, B3, A3, G3, F3, E3, D3, C3, B2, A2, G2.

Largo - broad, very slow

D-string & G-string (Orange)

Bass Samurai

B Minor scale - 2nd degree Yellow belt



Musical notation for the B Minor scale on the bass strings. The scale is written on a single staff in bass clef with a key signature of one sharp (F#). The notes are B, C, D, E, F#, G, A, B, A, G, F#, E, D, C, B. Fingerings are indicated by numbers 1, 4, 0, 1, 4, 0, 1, 4, 4, 1, 0, 4, 1, 0, 4, 1. The strings are labeled: (A-string) for B, C; (D-string) for D, E, F#; and (G-string) for G, A, B.

Twinkle, Twinkle - Orange belt

Larghetto

lyrics by Jane Taylor
adapted by W. A. Mozart



Musical notation for the song 'Twinkle, Twinkle' on the bass strings. It consists of three staves of music in bass clef with a 4/4 time signature. The melody is written on a single staff with a key signature of one sharp (F#). The notes are B, C, D, E, F#, G, A, B, A, G, F#, E, D, C, B. The piece ends with a double bar line.

Larghetto - somewhat broadly (fairly slow)

Shifting - third position (Red)

Bass Samurai

The Red Finger Pattern is 2nd degree Orange belt.

Use the note-reading key at the back of the booklet if needed.

Ode to Joy - Red belt

Moderato

Ludwig van Beethoven

The musical score for 'Ode to Joy' is presented in four staves of bass clef notation. The key signature is D major (two sharps) and the time signature is 4/4. The score includes various fingerings (1, 4, 0) and position markings (I pos., III pos., V) to guide the player through the shifting technique. The first staff begins with a 4/4 time signature and a key signature of two sharps. The second staff continues the melody with similar markings. The third staff features a change in position to V and includes a 0 fingering. The fourth staff concludes the piece with a final V position marking.

Moderato - at a moderate speed

III pos on G-string (Green)

Bass Samurai

D Major scale - 2nd degree Red belt

Musical notation for the D Major scale, 2nd degree Red belt. The scale is written on a bass clef staff with a key signature of one sharp (F#). The notes are: D2 (0), E2 (1), F#2 (4), G2 (0), A2 (1), B2 (4), C#3 (2), D3 (4), E3 (4), F#3 (2), G3 (4), A3 (1), B3 (0), C#4 (4), D4 (1), E4 (0). The notation is divided into two sections: 'I pos.' (measures 1-4) and 'III pos.' (measures 5-8).

French Folk Song - Green belt

Moderato

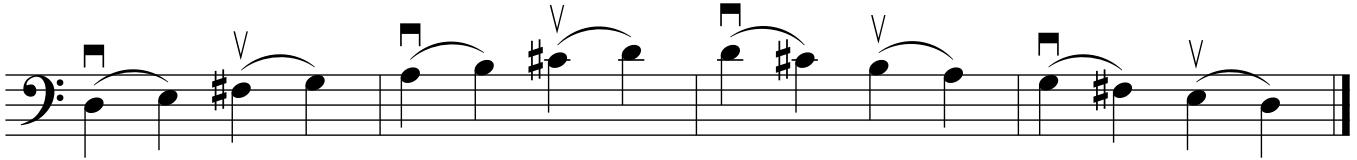
French Folk Song

Musical notation for the French Folk Song, Green belt. The piece is in 3/4 time with a key signature of one sharp (F#). The notation is divided into five systems, each with a position label: 'III pos.' (measures 1-4), 'I pos.' (measures 5-8), 'III pos.' (measures 9-12), 'III pos.' (measures 13-16), and 'I pos.' (measures 17-20). The notes are: D2 (4), E2, F#2, G2, A2, B2, C#3 (x1), D3, E3, F#3, G3, A3, B3, C#4, D4. The piece ends with a double bar line.

Moderato - at a moderate speed

Slurs (Blue)
Bass Samurai

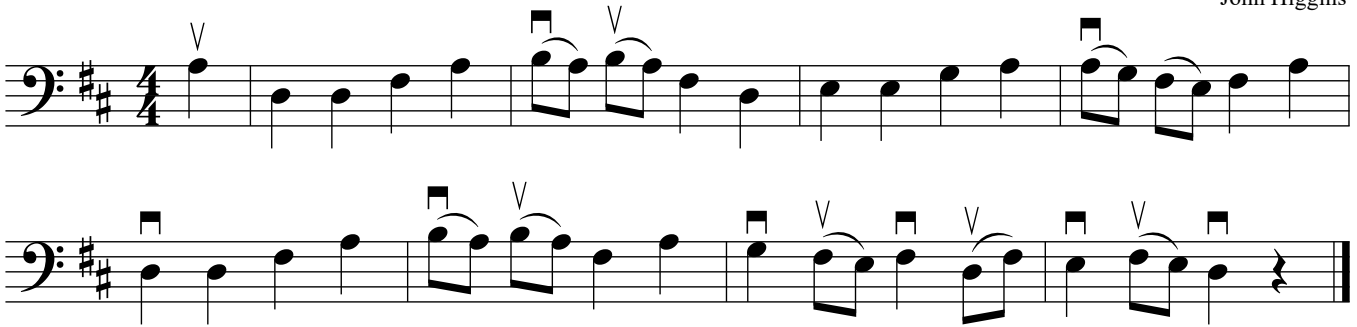
D Major scale, slurred - 2nd degree Green belt



Song for Maria - Blue belt

Andante

John Higgins



Andante - at a relaxed walking pace

2nd finger (Purple) Bass Samurai

The Black Finger Pattern is 2nd degree Blue belt.

C Major scale - 3rd degree Blue belt

Musical notation for the C Major scale in bass clef, 3rd degree Blue belt. The scale is written on a single staff with a key signature of one flat (Bb). The notes are: C2 (2), C3 (0), C4 (1), C5 (2), C6 (0), C7 (1), C8 (2), C9 (4), C10 (4), C11 (2), C12 (1), C13 (0), C14 (2), C15 (1), C16 (0), C17 (2). The notation is divided into three sections: the first section (C2-C5) is labeled 'I pos.', the second section (C6-C11) is labeled 'I 1/2 pos.', and the third section (C12-C17) is labeled 'I pos.'.

Russian Folk Tune - Purple belt

Andante

Russian Folk Song

Musical notation for the Russian Folk Tune in bass clef, Purple belt. The piece is in 4/4 time and consists of two staves. The first staff begins with a 2nd finger barre on the 2nd fret. The notes are: C2 (2), C3 (2), C4 (2), C5 (2), C6 (4), C7 (x1), C8 (2), C9 (4), C10 (1), C11 (2), C12 (2), C13 (2), C14 (2), C15 (2), C16 (2), C17 (2), C18 (2), C19 (2), C20 (2), C21 (2), C22 (2), C23 (2), C24 (2), C25 (2), C26 (2), C27 (2), C28 (2), C29 (2), C30 (2), C31 (2), C32 (2), C33 (2), C34 (2), C35 (2), C36 (2), C37 (2), C38 (2), C39 (2), C40 (2), C41 (2), C42 (2), C43 (2), C44 (2), C45 (2), C46 (2), C47 (2), C48 (2), C49 (2), C50 (2), C51 (2), C52 (2), C53 (2), C54 (2), C55 (2), C56 (2), C57 (2), C58 (2), C59 (2), C60 (2), C61 (2), C62 (2), C63 (2), C64 (2), C65 (2), C66 (2), C67 (2), C68 (2), C69 (2), C70 (2), C71 (2), C72 (2), C73 (2), C74 (2), C75 (2), C76 (2), C77 (2), C78 (2), C79 (2), C80 (2), C81 (2), C82 (2), C83 (2), C84 (2), C85 (2), C86 (2), C87 (2), C88 (2), C89 (2), C90 (2), C91 (2), C92 (2), C93 (2), C94 (2), C95 (2), C96 (2), C97 (2), C98 (2), C99 (2), C100 (2). The notation is divided into three sections: the first section (C2-C11) is labeled 'I 1/2 pos.', the second section (C12-C21) is labeled 'I pos.', and the third section (C22-C31) is labeled 'I 1/2 pos.', and the fourth section (C32-C41) is labeled 'I pos.'.

Andante - at a relaxed walking pace

E-string (Brown) Bass Samurai

E harmonic minor scale - 2nd degree Purple belt

Musical notation for the E harmonic minor scale on the E string. The scale is written on a single bass clef staff. The notes are E, F#, G, A, B, C, D, E. The fingering is indicated by numbers 0, 1, 2, 0, 1, 2, 2, 4, 4, 2, 2, 1, 0, 2, 1, 0. The scale is divided into three positions: I pos. (E, F#, G, A), III pos. (B, C, D, E), and I pos. (F#, G, A, B). The notes are: E (0), F# (1), G (2), A (0), B (1), C (2), D (2), E (4), F# (4), G (2), A (2), B (1), C (0), D (2), E (1), F# (0).

Moving Along - Brown belt

Andante

John Higgins

Musical notation for the 'Moving Along' exercise. It consists of two staves of music in bass clef, 4/4 time, with a key signature of one sharp (F#). The first staff starts with a quarter rest, followed by a sequence of quarter notes: E, F#, G, A, B, C, D, E, F#, G, A, B, C, D, E. The second staff starts with a quarter rest, followed by a sequence of quarter notes: E, F#, G, A, B, C, D, E, F#, G, A, B, C, D, E. The exercise is marked 'Andante'.

Andante - at a relaxed walking pace

Staccato & hooked bowing (2nd degree Brown belt)

Bass Samurai

D-Major scales, hooked

Four staves of music in bass clef, each containing a D-Major scale with hooked bowing. The scales are written in a sequence of four measures per staff. The first measure of each staff starts with a square bowing symbol above the first note. The notes are connected by slurs, and there are 'v' marks above some notes indicating bowing direction. The scales are: 1) D2-E2-F#2-G2-A2-B2-C#3-D3; 2) D3-E3-F#3-G3-A3-B3-C#4-D4; 3) D4-E4-F#4-G4-A4-B4-C#5-D5; 4) D5-E5-F#5-G5-A5-B5-C#6-D6.

D-Major scale, staccato

Two staves of music in bass clef, each containing a D-Major scale with staccato bowing. The scales are written in a sequence of four measures per staff. The notes are separated by staccato marks. The scales are: 1) D2-E2-F#2-G2-A2-B2-C#3-D3; 2) D3-E3-F#3-G3-A3-B3-C#4-D4; 3) D4-E4-F#4-G4-A4-B4-C#5-D5; 4) D5-E5-F#5-G5-A5-B5-C#6-D6.

Staccato & hooked bowing (Black)

Bass Samurai

Pop Goes the Weasel - 3rd degree Brown belt

Allegro vivace

English Folk Song

Arkansas Traveler - Black belt

Andantino

Col. Sanford C. Faulkner

Allegro - cheerful (quick and bright)

Vivace - lively (brisk)

Andantino - at a steady yet relaxed walking pace

you may remove this page from the booklet

Note-reading key

Bass

G-string

0 1 4 1 4

I pos. III pos.

D E F# G A

D-string

0 1 4 1 4

I pos. III pos.

G A B C D

A-string

0 1 4 1 4

I pos. III pos.

A B C# D E

E-string

0 1 4 1 4

I pos. III pos.

E F# G# A B