

Name

String Samurai



Bass

Bass Samurai

Bowing (2nd degree White belt)

Long bows

Musical notation for a bowing exercise on the bass clef staff. The exercise consists of four measures. Above the staff, there are square flags and 'V' symbols indicating bowing directions. The notes are: Measure 1: G2 (circled), A2 (circled), B2 (circled), C3 (circled); Measure 2: D3 (circled), E3 (circled), F3 (circled), G3 (circled); Measure 3: A3 (circled), B3 (circled), C4 (circled), D4 (circled); Measure 4: E4 (circled), F4 (circled), G4 (circled), A4 (circled). A circled 'A' is written below the second note of the first measure.

A-string (Yellow belt)

Mary Had a Little Lamb

Largo

Sarah Josepha Hale

Musical notation for the piece 'Mary Had a Little Lamb' on the A-string. The piece is in 4/4 time and begins with a treble clef. The first three notes are marked with fingerings: 4, 1, and 0. The notes are: G#2, B2, A2. The piece consists of two staves of music. The first staff contains the first 12 measures, and the second staff contains the final 4 measures. The piece ends with a double bar line.

Largo - broad, very slow

Shifting - third position (Red)

Bass Samurai

Ode to Joy - Red belt

Moderato

Ludwig van Beethoven

4
1 4 4
I pos. III pos. I pos.

1 4
III pos. I pos.

V 0 V 1 1

4 1 4
III pos. I pos.

Moderato - at a moderate speed

III pos on G-string (Green)

Bass Samurai

D Major scale - 2nd degree Red belt

Musical notation for the D Major scale, 2nd degree Red belt. The scale is written on a bass clef staff with a key signature of one sharp (F#) and a 4/4 time signature. The notes are: D2 (0), E2 (1), F#2 (4), G2 (0), A2 (1), B2 (4), C#3 (2), D3 (4), E3 (4), F#3 (2), G3 (4), A3 (1), B3 (0), C#4 (4), D4 (1), E4 (0). The notation is divided into two sections: 'I pos.' (measures 1-4) and 'III pos.' (measures 5-8).

French Folk Song - Green belt

Moderato

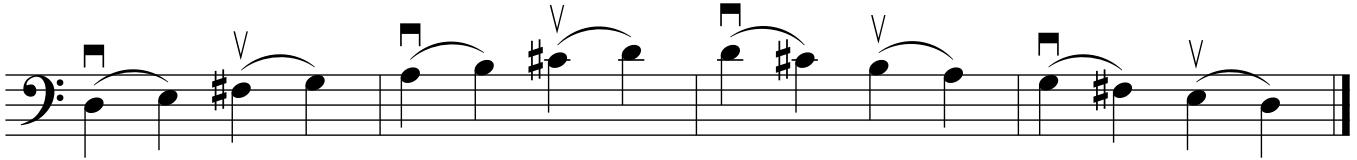
French Folk Song

Musical notation for the French Folk Song, Green belt. The piece is written on a bass clef staff with a key signature of one sharp (F#) and a 3/4 time signature. The tempo is marked 'Moderato'. The notation is divided into five systems, each with a position label: 'III pos.' (measures 1-4), 'I pos.' (measures 5-8), 'III pos.' (measures 9-12), 'III pos.' (measures 13-16), and 'I pos.' (measures 17-20). The notes are: D2 (4), E2 (2), F#2 (2), G2 (2), A2 (x1), B2 (2), C#3 (4), D3 (4), E3 (1), F#3 (4), G3 (1), A3 (0), B3 (1), C#4 (4), D4 (4), E4 (2), F#4 (4), G4 (1), A4 (0), B4 (1), C#5 (4), D5 (4), E5 (2), F#5 (4), G5 (1), A5 (0).

Moderato - at a moderate speed

Slurs (Blue)
Bass Samurai

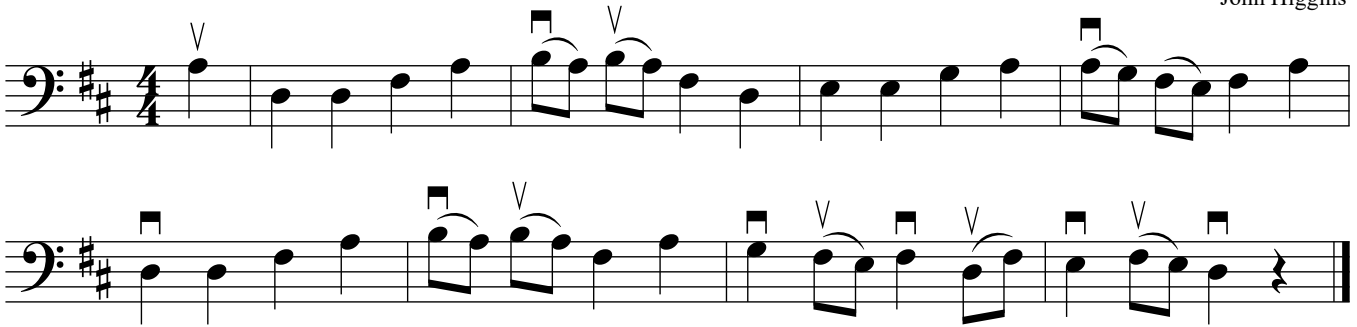
D Major scale, slurred - 2nd degree Green belt



Song for Maria - Blue belt

Andante

John Higgins



Andante - at a relaxed walking pace

2nd finger (Purple) Bass Samurai

C Major scale - 3rd degree Blue belt

Musical notation for the C Major scale in bass clef, 3rd degree Blue belt. The scale is written on a single staff with a key signature of one flat (B-flat). The notes are: B2 (2), Bb2 (0), C3 (1), C3 (2), D3 (0), D3 (1), E3 (2), E3 (4), F3 (4), F3 (2), G3 (1), G3 (0), A3 (2), A3 (1), B3 (0), B3 (2). The notation includes fingerings (0-4) and position markings: "I pos." under the first two notes, "I 1/2 pos." under the next six notes, and "I pos." under the last three notes.

Russian Folk Tune - Purple belt

Andante

Russian Folk Song

Musical notation for the Russian Folk Tune in bass clef, Purple belt. The piece is in 4/4 time and consists of two staves. The first staff begins with a 2nd finger barre on the 2nd fret. The notes are: B2 (2), Bb2 (2), C3 (2), C3 (4), D3 (x1), D3 (2), E3 (4), E3 (1), F3, F3, G3, G3, A3, A3, B3, B3. The notation includes fingerings (0-4) and position markings: "I 1/2 pos." under the notes from D3 to G3, and "I pos." under the notes from A3 to B3. The second staff continues the melody with notes: B3 (1), B3 (4), C4 (2), C4, D4, D4, E4, E4, F4, F4, G4, G4, A4, A4, B4. The notation includes fingerings (0-4) and position markings: "I 1/2 pos." under the notes from B3 to C4, and "I pos." under the notes from D4 to B4.

Andante - at a relaxed walking pace

E-string (Brown) Bass Samurai

E harmonic minor scale - 2nd degree Purple belt

Musical notation for the E harmonic minor scale on the E string. The scale is written on a single bass clef staff. The notes are E, F#, G, A, B, C, D, E. Fingerings are indicated by numbers 0-4 above the notes. The scale is divided into three positions: I pos. (E, F#, G, A), III pos. (B, C, D, E), and I pos. (E, F#, G, A). The notes are: E (0), F# (1), G (2), A (0), B (1), C (2), D (2), E (4), F# (4), G (2), A (2), B (1), C (0), D (2), E (1), F# (0).

Moving Along - Brown belt

Andante

John Higgins

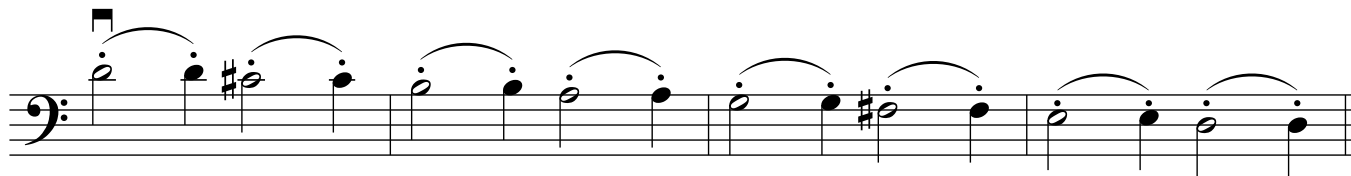
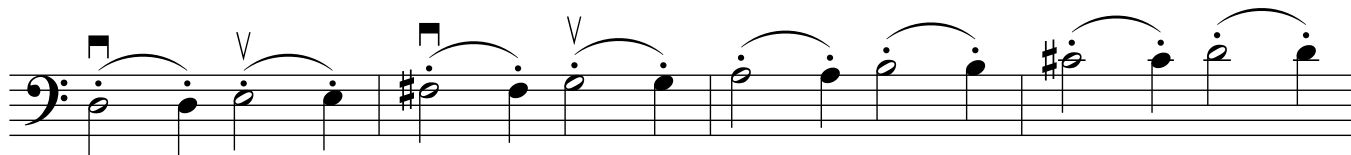
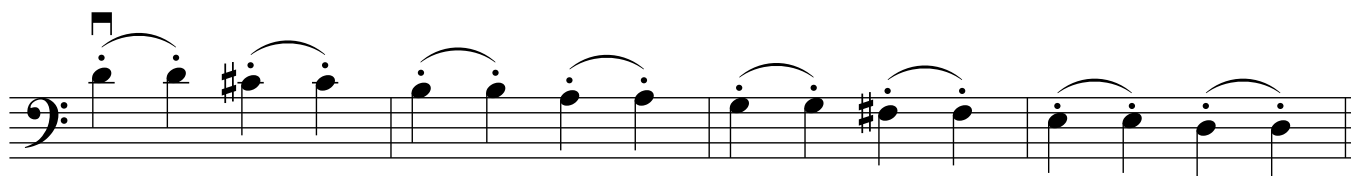
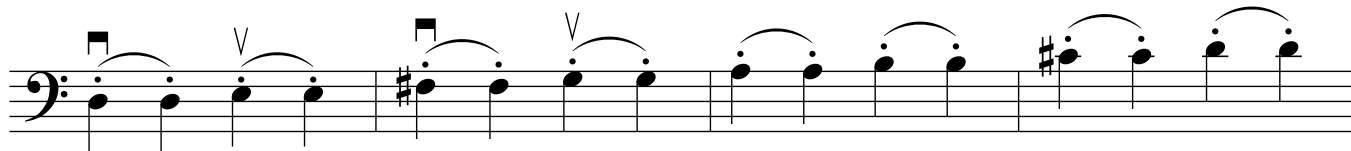
Musical notation for the 'Moving Along' exercise, consisting of two staves of music. The first staff is in 4/4 time and features a sequence of quarter notes: E, F#, G, A, B, C, D, E, F#, G, A, B, C, D, E. The second staff is in 4/4 time and features a sequence of quarter notes: E, F#, G, A, B, C, D, E, F#, G, A, B, C, D, E. Both staves begin with a fermata over the first note.

Andante - at a relaxed walking pace

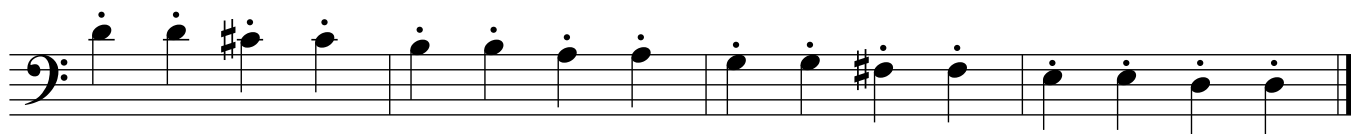
Staccato & hooked bowing (2nd degree Brown belt)

Bass Samurai

D-Major scales, hooked



D-Major scale, staccato



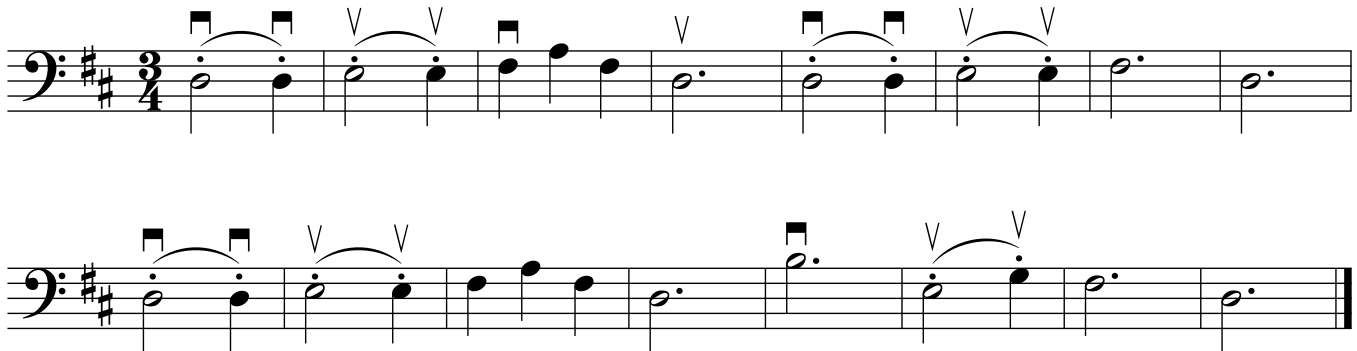
Staccato & hooked bowing (Black)

Bass Samurai

Pop Goes the Weasel - 3rd degree Brown belt

Allegro vivace

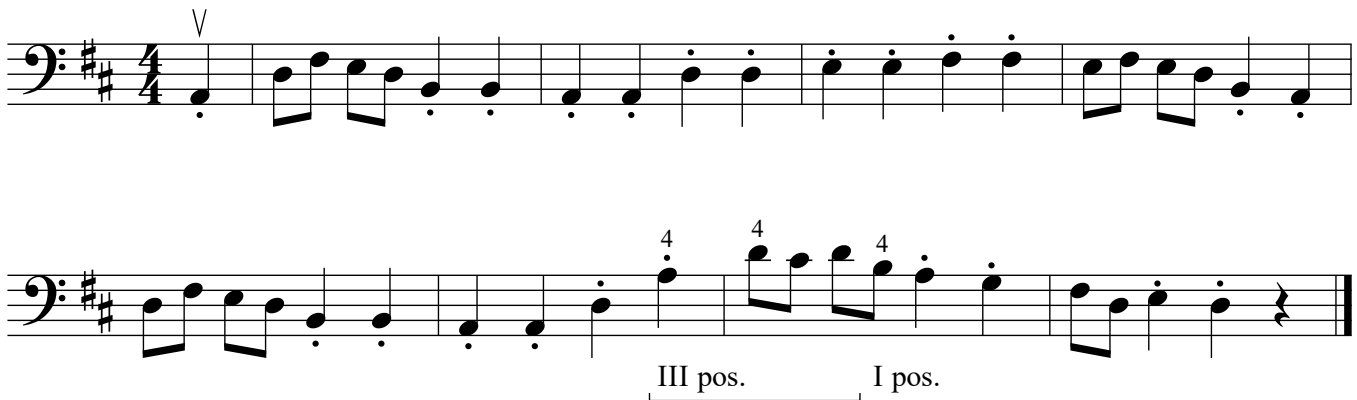
English Folk Song



Arkansas Traveler - Black belt

Andantino

Col. Sanford C. Faulkner



Allegro - cheerful (quick and bright)

Vivace - lively (brisk)

Andantino - at a steady yet relaxed walking pace