

Name

# String Samurai



# Violin

# Violin Samurai

## Bowing (2nd degree White belt)

Long bows

Musical notation for a long bow exercise. It consists of a single staff in treble clef. The key signature has one sharp (F#), and the time signature is 4/4. The exercise is divided into four measures. Above the staff, bowing directions are indicated: Measure 1 has a square (down bow) over D4 and a 'V' (up bow) over E4. Measure 2 has a square over F#4 and a 'V' over G4. Measure 3 has a square over A4, a 'V' over B4, a square over C5, and a 'V' over D5. Measure 4 has a square over E5, a 'V' over F#5, a square over G5, and a 'V' over A5. The notes are written as half notes. A circled 'A' is written below the staff in the second measure, and a circled 'D' is written below the staff in the first measure.

## A-string (Yellow belt)

Morning Dance

Adagio

Slavic Folk Song

Musical notation for an A-string exercise. It consists of a single staff in treble clef. The key signature has one sharp (F#), and the time signature is 4/4. The exercise is divided into four measures. Above the staff, fingering numbers are indicated: Measure 1 has '3' over D4, '2' over E4, and '0' over F#4. Measure 2 has '1' over G4. Measure 3 has '1' over A4. Measure 4 has '1' over B4. The notes are written as quarter notes. A circled 'D' is written below the staff in the first measure, and a circled 'A' is written below the staff in the second measure.

*Adagio - slowly*

# D-string (Orange)

## Violin Samurai

D Major scale - 2nd degree Yellow belt

Musical notation for the D Major scale on the D and A strings. The scale is written on a single treble clef staff. The first four notes (D, E, F#, G) are labeled as the D-string and are played with fingerings 0, 1, 2, and 3. The next four notes (A, B, C#, D) are labeled as the A-string and are played with fingerings 0, 1, 2, and 3. The final four notes (D, C#, B, A) are played with fingerings 3, 2, 1, and 0. The notes are: D (0), E (1), F# (2), G (3), A (0), B (1), C# (2), D (3), D (3), C# (2), B (1), A (0), G (3), F# (2), E (1), D (0).

Twinkle, Twinkle - Orange belt

**Larghetto**

lyrics by Jane Taylor  
adapted by W. A. Mozart

Musical notation for the 'Twinkle, Twinkle' piece in 4/4 time. The piece is written on three treble clef staves. The first staff contains the first two measures, the second staff contains the next two measures, and the third staff contains the final two measures. The notes are: D4, E4, F#4, G4, A4, B4, C#5, D5, D5, C#5, B4, A4, G4, F#4, E4, D4.

*Larghetto - somewhat broadly (fairly slow)*

# 4th finger (Red) Violin Samurai

D Major scale, no open strings - 2nd degree Orange belt

(G-string) (D-string) (A-string)

Ode to Joy - Red belt

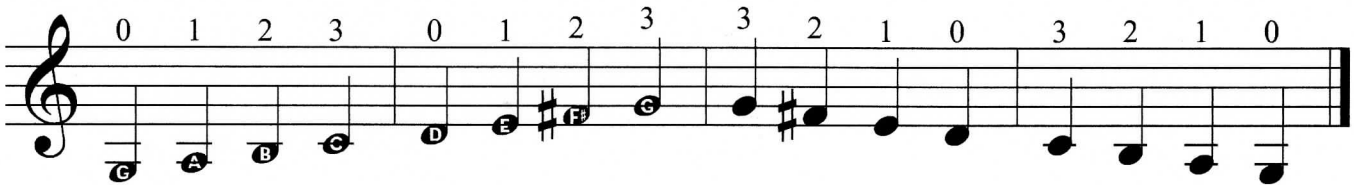
**Moderato**

Ludwig van Beethoven

*Moderato - at a moderate speed*

# G-string (Green) Violin Samurai

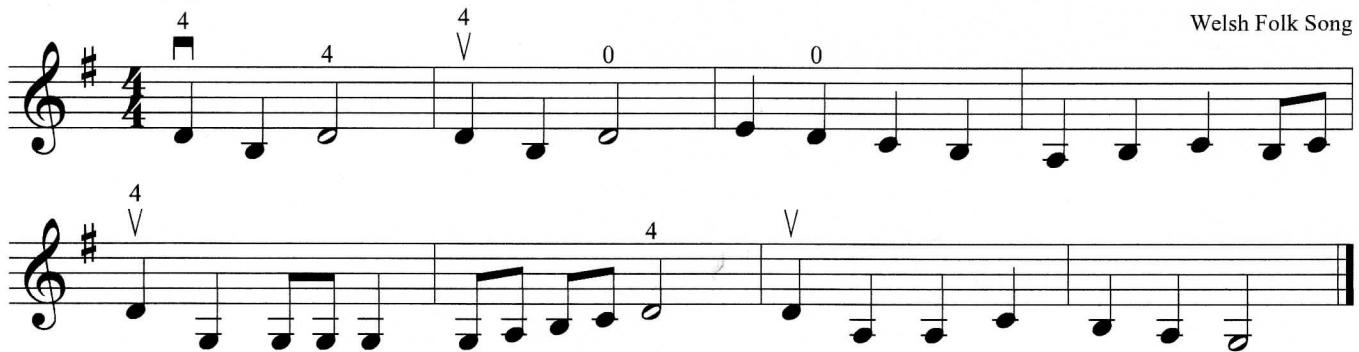
G Major scale - 2nd degree Red belt



This Old Man - Green belt

**Andante moderato**

Welsh Folk Song



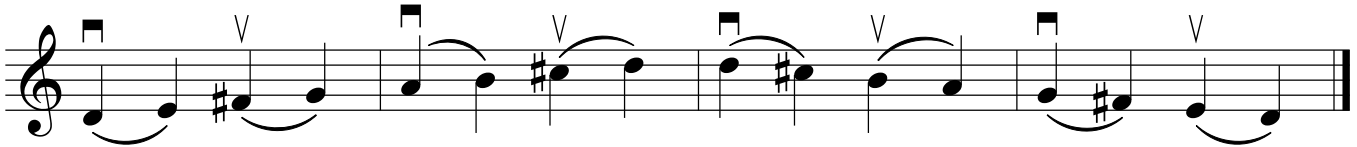
*Andante - at a relaxed walking pace*  
*Moderato - at a moderate speed*

# Slurs (Blue)

## Violin Samurai

*Use the note-reading key at the back of the booklet if needed.*

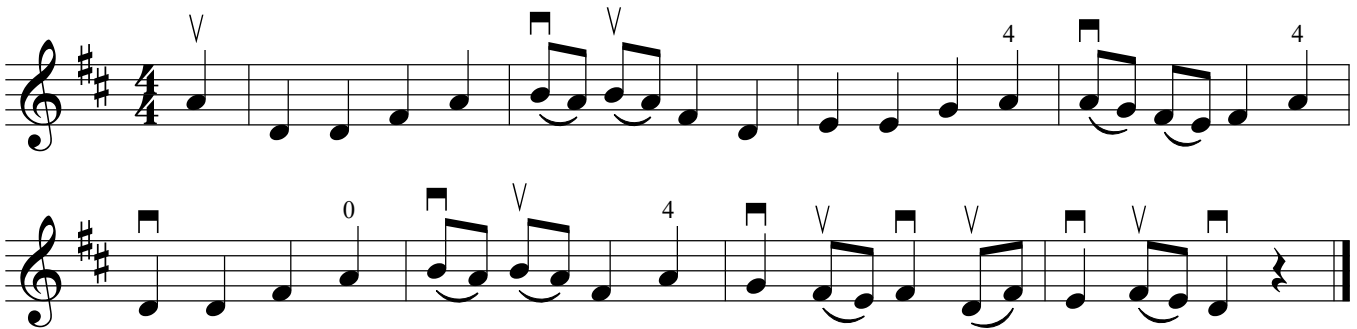
D Major scale, slurred - 2nd degree Green belt



Song for Maria - Blue belt

**Andante**

John Higgins

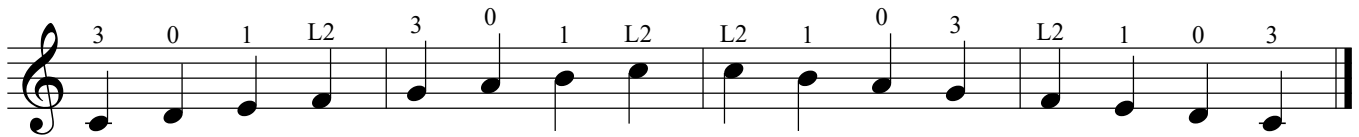


*Andante - at a relaxed walking pace*

# low 2nd finger (Purple) Violin Samurai

*The Black Finger Pattern is 2nd degree Blue belt.*

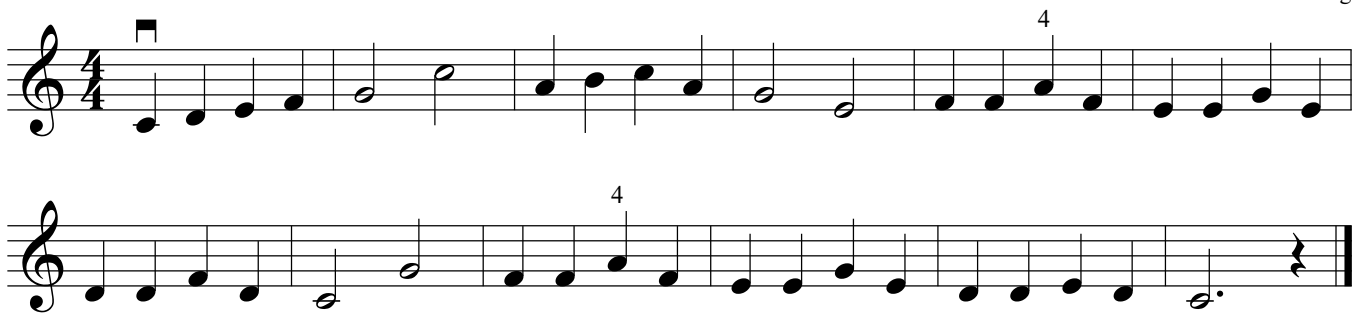
## C Major scale - 3rd degree Blue belt



## Russian Folk Tune - Purple belt

**Andante**

Russian Folk Song



*Andante - at a relaxed walking pace*

# E-string (Brown) Violin Samurai

G Major scale, 2 octave - 2nd degree Purple belt

Musical notation for the G Major scale, 2 octave - 2nd degree Purple belt. The notation is written on two staves in treble clef. The first staff contains the first octave of the scale: G4 (0), A4 (1), B4 (2), C5 (3), D5 (0), E5 (1), F#5 (2), G5 (3), A5 (3), B5 (0), C6 (1), D6 (L2), E6 (3), F#6 (0), G6 (1), A6 (L2). The second staff contains the second octave: B6 (L2), C7 (1), D7 (0), E7 (3), F#7 (L2), G7 (1), A7 (0), B7 (3), C8 (3), D8 (2), E8 (1), F#8 (0), G8 (3), A8 (2), B8 (1), C9 (0).

Shepherd's Hey - Brown belt

Musical notation for Shepherd's Hey - Brown belt. The notation is written on a single staff in treble clef. The key signature is two sharps (F# and C#) and the time signature is 2/4. The tempo marking is **Moderato**. The piece is identified as an **English Folk Song**. The notation includes a triplet of eighth notes in the first measure and various eighth and sixteenth note patterns throughout.

*Moderato - at a moderate speed*



Staccato & hooked bowing (2nd degree Brown belt)

# Violin Samurai

D-Major scales, hooked

The first section contains four staves of musical notation for D-Major scales, hooked. The first two staves represent the ascending scale, and the last two staves represent the descending scale. The notes are marked with a 'V' above them, indicating hooked bowing. The first staff starts with a square bowing symbol above the first note. The notes are: D4, E4, F#4, G4, A4, B4, C#5, D5. The second staff continues from the first: D5, C#5, B4, A4, G4, F#4, E4, D4. The third staff starts with a square bowing symbol above the first note. The notes are: D4, E4, F#4, G4, A4, B4, C#5, D5. The fourth staff continues from the third: D5, C#5, B4, A4, G4, F#4, E4, D4.

D-Major scale, staccato

The second section contains two staves of musical notation for the D-Major scale, staccato. The first staff represents the ascending scale, and the second staff represents the descending scale. The notes are marked with a 'V' above them, indicating staccato bowing. The first staff starts with a square bowing symbol above the first note. The notes are: D4, E4, F#4, G4, A4, B4, C#5, D5. The second staff continues from the first: D5, C#5, B4, A4, G4, F#4, E4, D4.

# Staccato & hooked bowing (Black)

## Violin Samurai

### Pop Goes the Weasel - 3rd degree Brown belt

**Allegro vivace**

English Folk Song

Musical notation for 'Pop Goes the Weasel' in G major (one sharp) and 3/4 time. The piece consists of two staves. The first staff contains the first 12 measures, and the second staff contains the remaining 12 measures. The melody is characterized by staccato eighth notes and hooked bowing. Above the notes, there are square bowing symbols: a square for up-bow and a 'V' for down-bow. A '4' is written above the fourth measure of the first staff, indicating a fourth finger fingering. The piece concludes with a double bar line at the end of the second staff.

### Arkansas Traveler - Black belt

**Andantino**

Col. Sanford C. Faulkner

Musical notation for 'Arkansas Traveler' in G major (one sharp) and 4/4 time. The piece consists of two staves. The first staff contains the first 12 measures, and the second staff contains the remaining 12 measures. The melody is characterized by a steady, relaxed walking pace. Above the first measure of the first staff, there is a 'V' symbol indicating down-bow. The piece concludes with a double bar line at the end of the second staff.

*Allegro - cheerful (quick and bright)*

*Vivace - lively (brisk)*

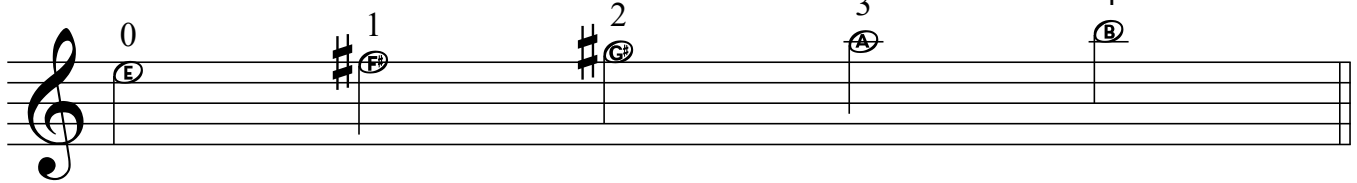
*Andantino - at a steady yet relaxed walking pace*

*you may remove this page from the booklet*

# Note-reading key

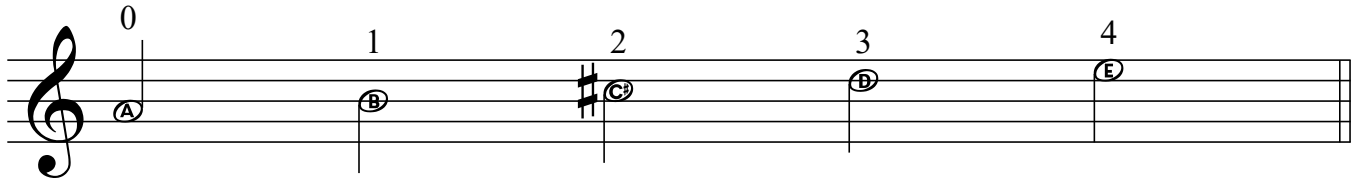
## Violin

E-string



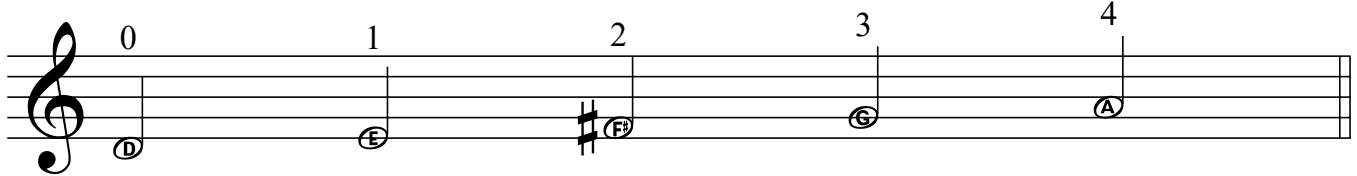
Musical staff for the E-string. The staff is in treble clef. Fret positions 0 to 4 are marked above the staff. The notes are: 0 (E), 1 (F#), 2 (G#), 3 (A), 4 (B).

A-string



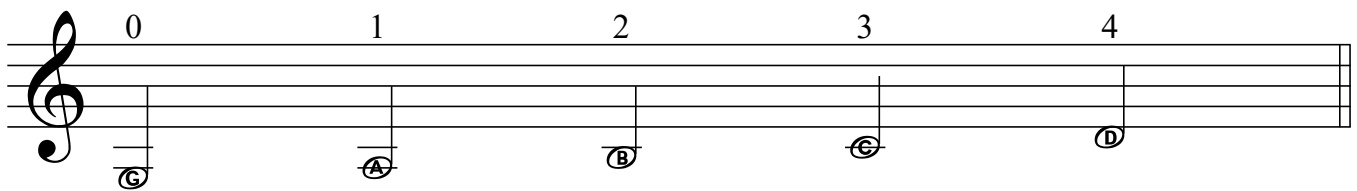
Musical staff for the A-string. The staff is in treble clef. Fret positions 0 to 4 are marked above the staff. The notes are: 0 (A), 1 (B), 2 (C#), 3 (D), 4 (E).

D-string



Musical staff for the D-string. The staff is in treble clef. Fret positions 0 to 4 are marked above the staff. The notes are: 0 (D), 1 (E), 2 (F#), 3 (G), 4 (A).

G-string



Musical staff for the G-string. The staff is in treble clef. Fret positions 0 to 4 are marked above the staff. The notes are: 0 (G), 1 (A), 2 (B), 3 (C), 4 (D).