

Name

String Samurai



Cello

Cello Samurai

Bowing (2nd degree White belt)

Long bows

Musical notation for a long bow exercise on the cello. The staff is in bass clef. The notes are: D2 (open), E2 (open), A2 (open), G2 (open), F2 (open), E2 (open), D2 (open), C2 (open), B1 (open), A1 (open), G1 (open), F1 (open), E1 (open), D1 (open). Above the notes are bowing symbols: a square for down bow and a 'V' for up bow. The sequence is: square, V, square, V, square, V, square, V, square, V, square, V, square, V, square.

A-string (Yellow belt)

Morning Dance

Adagio

Slavic Folk Song

Musical notation for an A-string exercise on the cello. The staff is in bass clef with a 4/4 time signature. The notes are: D2 (4th finger), E2 (3rd finger), F#2 (open), G2 (open), A2 (open), B2 (1st finger), C#3 (3rd finger), D3 (open), E3 (open), F#3 (open), G3 (open), A3 (open), B3 (open), C4 (open). Fingerings are indicated above the notes: 4, 3, 0, 1, 3.

Adagio - slowly

D-string (Orange) Cello Samurai

D Major scale - 2nd degree Yellow belt

Musical notation for the D Major scale on the D and A strings. The notation is on a single bass clef staff. The first four notes (D, E, F#, G) are labeled as the D-string and have fingerings 0, 1, 3, 4. The next eight notes (A, B, C#, D, D, C#, B, A) are labeled as the A-string and have fingerings 0, 1, 3, 4, 4, 3, 1, 0. The final four notes (G, F#, E, D) have fingerings 4, 3, 1, 0.

Twinkle, Twinkle - Orange belt

Larghetto

lyrics by Jane Taylor
adapted by W. A. Mozart

Musical notation for the 'Twinkle, Twinkle' melody on the cello. The notation is on three bass clef staves. The first staff begins with a 4/4 time signature. The melody consists of quarter notes and half notes with fermatas. The notes are: D, E, F#, G, A, B, C#, D, D, C#, B, A, G, F#, E, D.

Larghetto - somewhat broadly (fairly slow)

Shifting - second position (Red)

Cello Samurai

The Red Finger Pattern is 2nd degree Orange belt.

Use the note-reading key at the back of the booklet if needed.

Ode to Joy - Red belt

Moderato

Ludwig van Beethoven

II pos. I pos.

II pos. I pos.

II pos.

I pos.

Moderato - at a moderate speed

G-string (Green) Cello Samurai

G Major scale - 2nd degree Red belt

Musical notation for the G Major scale on the G string, 2nd degree Red belt. The scale is written on a single bass clef staff. The notes are G, A, B, C, D, E, F#, G, A, B, C, D, E, F#, G. Fingerings are indicated by numbers 0-4 above the notes. The scale is divided into two measures of six notes each.

This Old Man - Green belt

Andante moderato

Welsh Folk Song

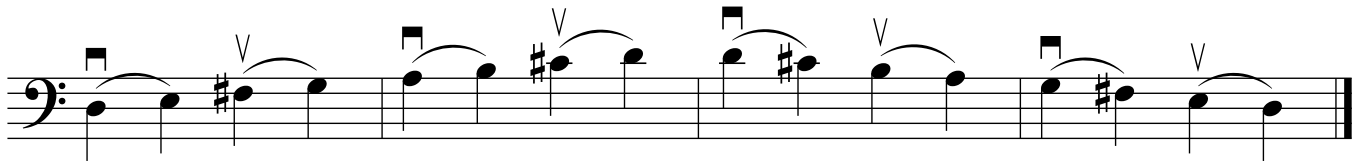
Musical notation for 'This Old Man' on the G string, Green belt. The piece is written on two bass clef staves. The key signature is one sharp (F#) and the time signature is 4/4. The notation includes various note values, rests, and dynamic markings (V). The piece is identified as a Welsh Folk Song.

Andante - at a relaxed walking pace
Moderato - at a moderate speed

Slurs (Blue)

Cello Samurai

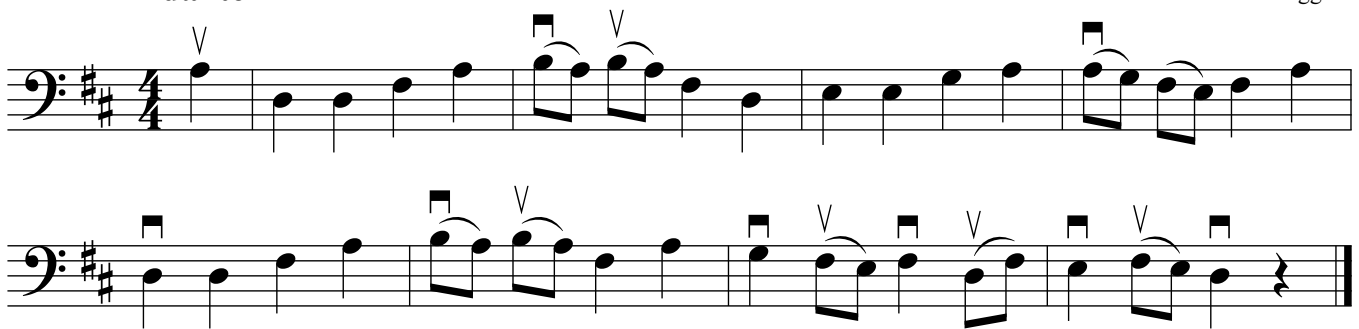
D Major scale, slurred - 2nd degree Green belt



Song for Maria - Blue belt

Andante

John Higgins

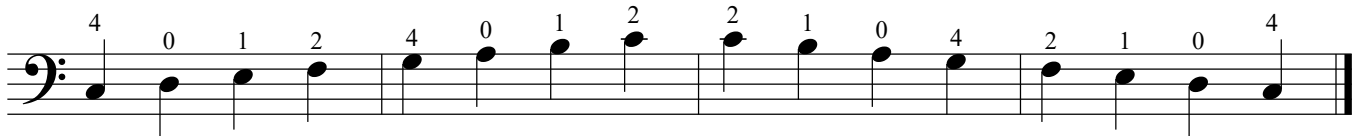


Andante - at a relaxed walking pace

2nd finger (Purple) Cello Samurai

The Black Finger Pattern is 2nd degree Blue belt.

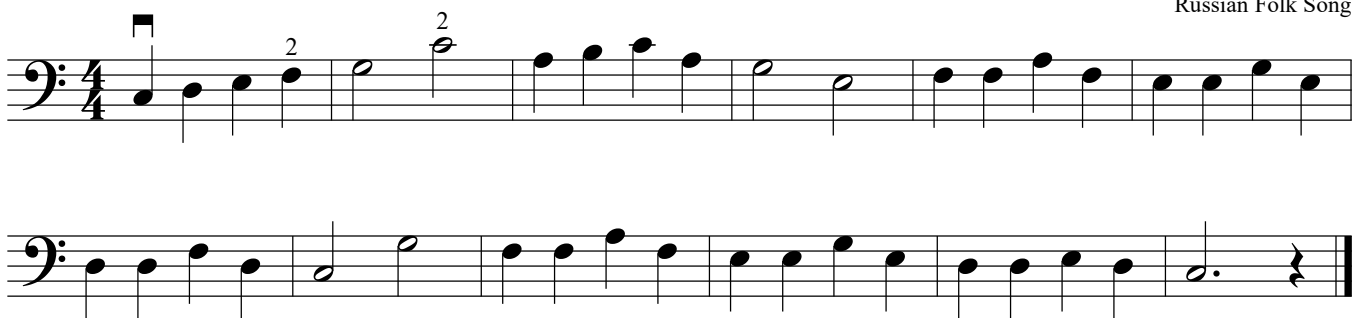
C Major scale, upper octave - 3rd degree Blue belt



Russian Folk Tune - Purple belt

Andante

Russian Folk Song



Andante - at a relaxed walking pace

C-string (Brown) Cello Samurai

C Major scale, 2 octave - 2nd degree Purple belt

Musical notation for the C Major scale, 2 octave - 2nd degree Purple belt. The notation is written on two staves in bass clef. The first staff contains the first octave of the scale (C2 to C3) with fingerings: 0, 1, 3, 4, 0, 1, 3, 4, 4, 0, 1, 2, 4, 0, 1, 2. The second staff contains the second octave (C3 to C4) with fingerings: 2, 1, 0, 4, 2, 1, 0, 4, 4, 3, 1, 0, 4, 3, 1, 0.

Long, Long Ago - Brown belt

Adagietto

T. H. Bayly

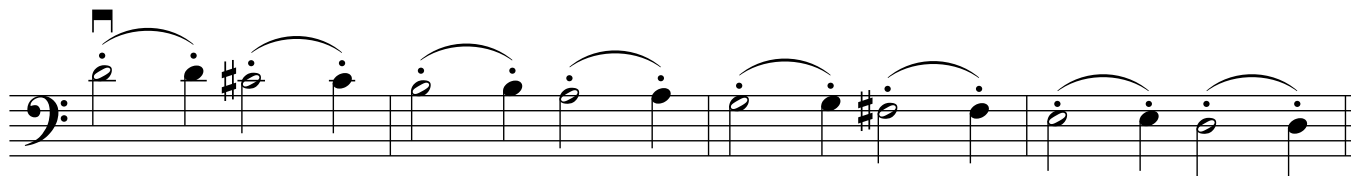
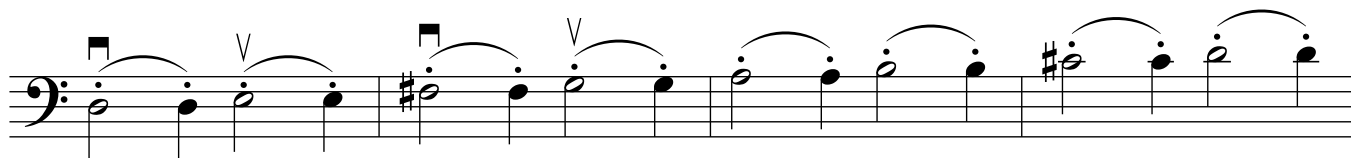
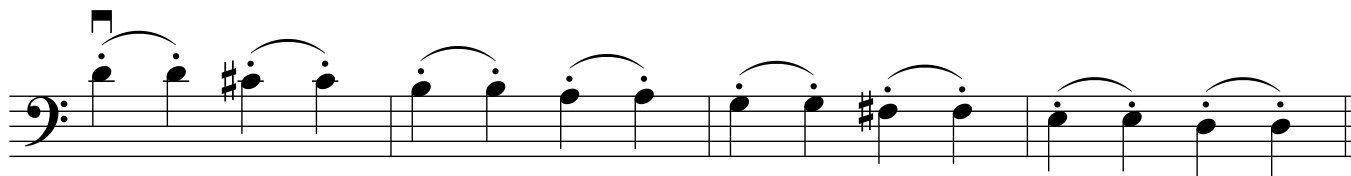
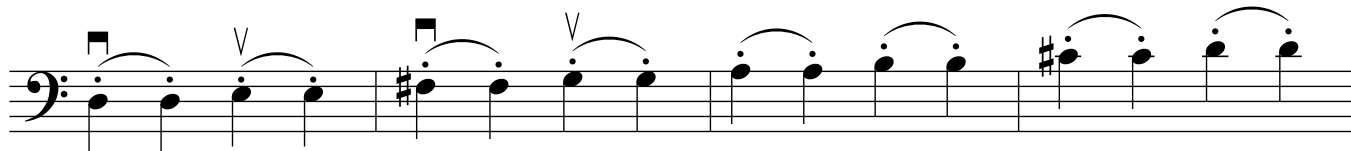
Musical notation for the piece "Long, Long Ago" - Brown belt. The notation is written on two staves in bass clef, 4/4 time signature. The first staff contains the first measure of the piece, and the second staff contains the second measure. The notation consists of eighth and sixteenth notes, with some rests and a fermata at the end of the second measure.

Adagietto - somewhat slowly

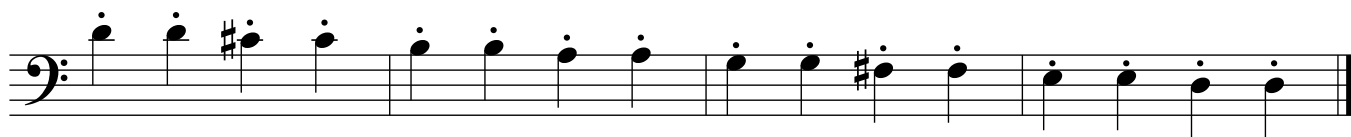
Staccato & hooked bowing (2nd degree Brown belt)

Cello Samurai

D-Major scales, hooked



D-Major scale, staccato



Staccato & hooked bowing (Black)

Cello Samurai

Pop Goes the Weasel - 3rd degree Brown belt

Allegro vivace

English Folk Song

Musical notation for 'Pop Goes the Weasel' in bass clef, 3/4 time, key of D major. The piece consists of two staves of music. The first staff contains the first eight measures, and the second staff contains the final four measures. The music features a mix of quarter and eighth notes, with staccato markings (V) and hooked bowing (arcs) over several notes.

Arkansas Traveler - Black belt

Andantino

Col. Sanford C. Faulkner

Musical notation for 'Arkansas Traveler' in bass clef, 4/4 time, key of D major. The piece consists of two staves of music. The first staff contains the first eight measures, and the second staff contains the final four measures. The music features a mix of quarter and eighth notes, with a staccato marking (V) at the beginning.

Allegro - cheerful (quick and bright)

Vivace - lively (brisk)

Andantino - at a steady yet relaxed walking pace

you may remove this page from the booklet

Note-reading key

Cello

A-string

A musical staff in bass clef for the A-string. It shows four notes: A (fingering 0), B (fingering 1), C# (fingering 3), and D (fingering 4). The notes are placed on the first, second, third, and fourth lines of the staff respectively.

D-string

A musical staff in bass clef for the D-string. It shows four notes: D (fingering 0), E (fingering 1), F# (fingering 3), and G (fingering 4). The notes are placed on the first, second, third, and fourth lines of the staff respectively.

G-string

A musical staff in bass clef for the G-string. It shows four notes: G (fingering 0), A (fingering 1), B (fingering 3), and C (fingering 4). The notes are placed on the first, second, third, and fourth lines of the staff respectively.

C-string

A musical staff in bass clef for the C-string. It shows four notes: C (fingering 0), D (fingering 1), E (fingering 3), and F (fingering 4). The notes are placed on the first, second, third, and fourth lines of the staff respectively.